

ESTABLISHMENT OF BMA & ITS RELEVANCE TO BORDER SECURITY

dr Mike Masiapato, Commissioner: BMA

BORDER • MANAGEMENT • AUTHORITY

Secure Borders for Development

PURPOSE OF THE PRESENTATION



The purpose of this presentation is to *reflect on the modalities towards the establishment of Border Management Authority (BMA) and its relevance to border security,*



OUTLINE OF THE PRESENTATION

- **PART A:** PROBLEM STATEMENT & LEGISLATIVE MANDATE OF BMA
- **PART B:** TWO TIER PROCESSES TOWARDS ESTABLISHMENT OF BMA
 - INTEGRATION PROCESS
 - CAPACITATION PROCESS
- **PART C:** RELEVANCE OF BMA IN BORDER SECURITY,
 - PORTS OF ENTRY
 - BORDER LAW ENFORCEMENT AREA (BORDERLINE)
- **PART D:** RECOMMENDED WAY-FORWARD
- ***(Context: BMA is incubated within Home Affairs until 31/3/2023)***



PART A:
RECAP & REFLECTION ON:

- ***PROBLEM STATEMENT***
- ***LEGISLATIVE FRAMEWORK***



RECAP ON THE *PROBLEM STATEMENT*:

- o **Since 1994, we deployed a multi-agency approach: 7** organs of state conducting border law enforcement in Ports of Entry & borderline,
 - (a) As a result, about five **coordination** iterations emerged:
 - i. *Border Affairs Coordinating Committee (BACC - 1996)*
 - ii. *National Inter-Departmental Structure on Border Control (NIDS – 1997)*
 - iii. *Border Control Operational Coordinating Committee (BCOCC - 2001)*
 - iv. *Inter-Agency Clearing Forum (IACF - 2010)*
 - v. *National Border Management Coordinating Committee (NBMCC - 2013)*
 - (c) In 28 years, it is clear this **multi-agency approach**, depending on informal **coordination** created fragmentation, silo realities, corruption,
 - (d) Now, we are moving away from this multi-agency approach to an **integrated border management approach** with a **single command and control**,
 - (e) BMA assumes all frontline functions, while **departments retain policy & legislative**,

RECAP ON THE BMA *LEGISLATIVE MANDATE*:

- **Based on Section 5 of the BMA Act, the Authority is expected to fulfill the following legislated mandate:**
 - (a) *Facilitate and manage the legitimate movement of persons within the border law enforcement area and at ports of entry;*
 - (b) *Facilitate and manage the legitimate movement of goods within the border law enforcement area and at ports of entry;*
 - (c) *Co-operate and co-ordinate its border law enforcement functions with SAPS, SARS & SANDF, border communities or any other persons.*
- Section 4 (2) emphasizes that *border law enforcement* functions should be exclusively performed by the officers of the BMA,
- BMA's is overseen by the *Border Technical Committee (BTC) & Inter-Ministerial Consultative Committee (IMCC) – (No Board)*.

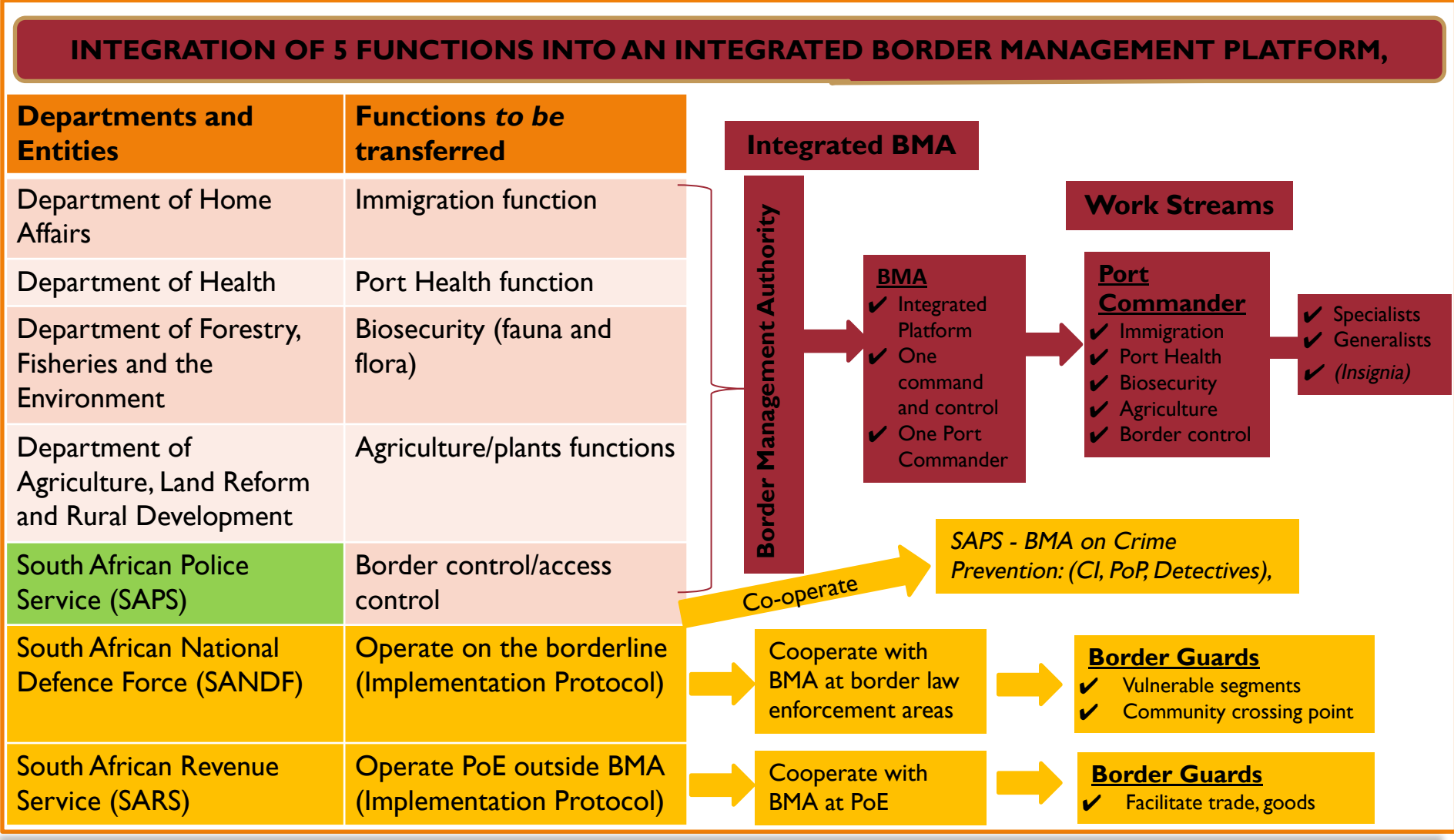


PART BI: **UNDERSTANDING:**

- ***MODALITIES OF THE INTEGRATION PROCESS***
- ***MODALITIES OF THE USED INTEGRATION MODEL***

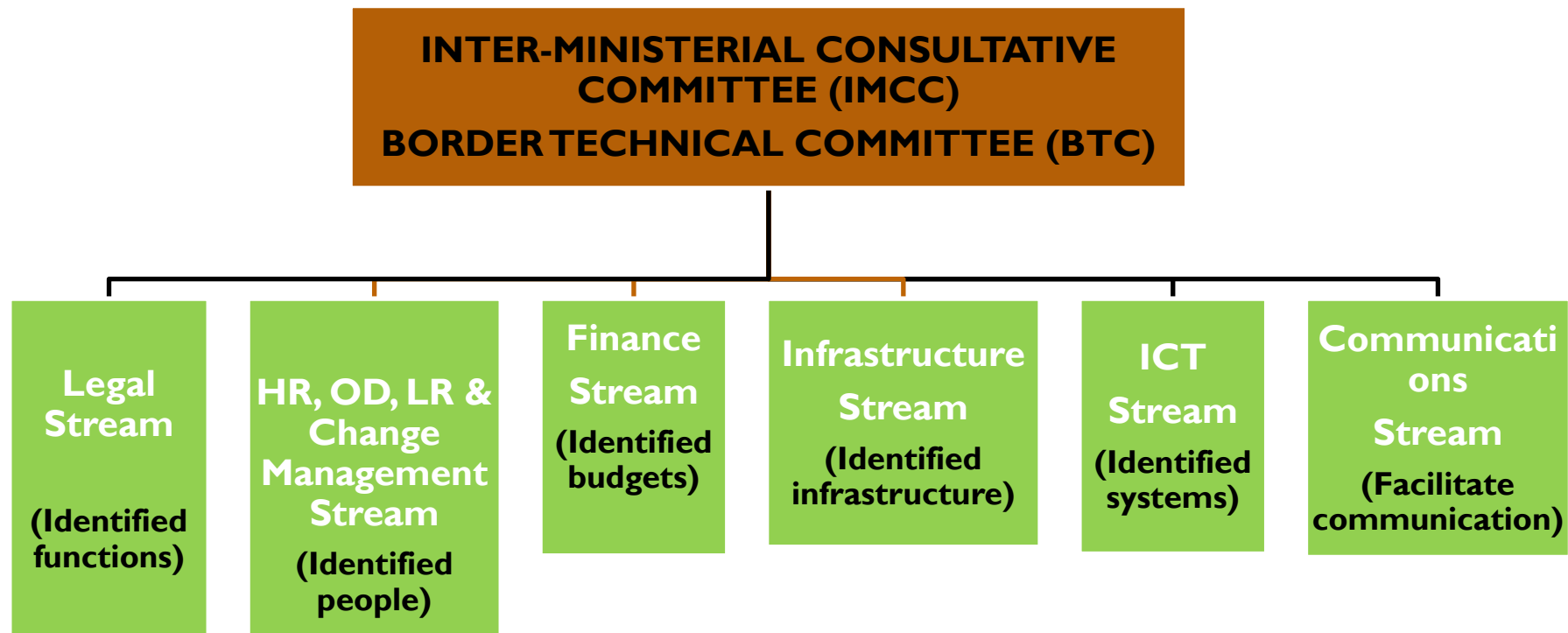


COMPLEXITIES OF THE INTEGRATION PROCESS



COMPLEXITIES OF INTEGRATION MODEL: *NMOG*

- **Model:** *National Micro-organization of government (NMOG)*,
- **Negotiated** with *Labour & used in various occasions (PSCBC)*,





PART B2:
UNDATE ON CAPACITATION PROCESS:

- ***RECRUITMENT OF LEADERSHIP***
- ***ON-BOARDING & DEPLOYMENT OF BORDER GUARDS***



RECRUITMENT OF LEADERSHIP:

- o **Following the enactment of the BMA Act in July 2020, that allowed few activities:**
 - (a) *Appointment of the Commissioner and the two Deputy Commissioners (Operations & Corporate Services);*
 - (b) *Completion of the transitional structure & finalization of processes for incubation of BMA as special Branch within the Dept. of Home Affairs;*
 - (c) *Processes underway for recruitment of National Commanders: Border Control, National Targeting Centre (NTC) – (73 PTC);*
 - (d) *Later, recruitment of the 5 Regional Commanders (**post-integration**)*
 - (e) *Later, we shall recruit the 73 Port Commanders, (Categorized ports) (**Post-integration**);*
 - (f) *Allowed for the recruitment of the 200 Border Guards, (deployment matrix on the next slide)*
 - (g) **Capacitation to converge with Integration on 31 March 2023- (ready for the 01st of April 2023)**

ONBOARDING & DEPLOYMENT OF BORDER GUARDS

Province	Segment	Border Guards	Senior BG	Chief BG	TOTAL
Limpopo	Beit Bridge	36	3	1	40
Mpumalanga	Lebombo	36	2	1	39
	Oshoek	30	2	1	33
	Skukuza	20	2	0	22
KZN	Kosi Bay	30	2	1	33
Free State	Maseru-Ficksburg	30	2	1	33





PART C:
RELEVANCE OF BMA IN BORDER SECURITY:

- ***PORT OF ENTRY (PoE)***
- ***BORDER LAW ENFORCEMENT AREA (BORDERLINE)***



ROLE OF BMA IN BORDER SECURITY AT *PoE*:

- **Enforce stringent access control into the Ports of Entry:**
- **Effective use of technology through Port Targeting Centre (PTC) linked to the National Targeting Centre (NTC):**
- **Full application of intelligence-led border management through the NTC (I) to the PTC (72):**
- **Enforce compliance to Port Business Processes with close supervisory imperatives for clear accountability:**
- **Full application of Advance Passenger Processing system:**

ROLE OF BMA IN BORDER SECURITY AT *BORDERLINE*:

- **Static deployment Border Guards at the vulnerable segments of the borderline for border law enforcement purposes (10 KM from PoE & beyond):**
 - *Enforce immigration law enforcement (apprehend & deport);*
 - *Enforce port health related functions;*
 - *Enforce environmental related functions;*
 - *Enforce agriculture related functions (food and mouth);*
 - *Enforce access control at Informal Community Crossing Points,*

PART D: RECOMMENDED WAY-FORWARD

- Based on the afore-presented slides, members of the IMS leadership are urged to:
 - *Note the progress made towards the operationalization of BMA into a schedule 3 (a) public entity through integration & capacitation,*
 - *Support the work and where possible assist to smoothen any challenges experienced along the way,*
 - *Champion the assertion that BMA seeks to **secure borders for development** through people & trade facilitation, enhanced tourism, counter illicit trade, human smuggling & trafficking,*
 - *Articulate correct and factual details on the rationale for the establishment of the BMA, including the anomaly that BMA seeks to address,*



THANK YOU,

